

JG Management

Professional Office Space

Westlake Office Court

5743 Corsa Ave.

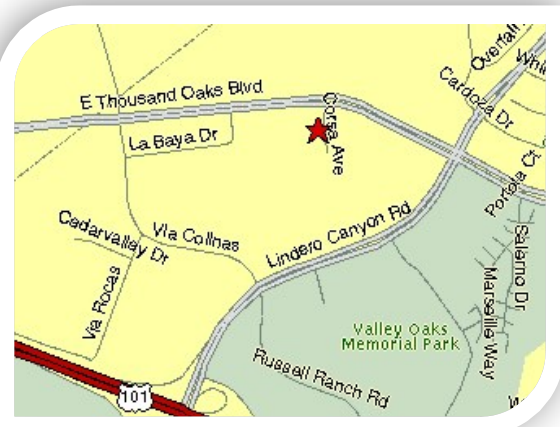
Westlake Village, California



This 60,000 Sq. Ft., 2-Story Office Building Offers:

- ❖ **24-7 HVAC Control**
- ❖ **Common Conference/Board Room**
 - **Wireless Internet Available**
 - **iPad Media Center Ready**
 - **Seats up to 16**
 - **Adjacent to Full Service Kitchen and Common Area Lounge**

- ❖ **Impressive Lobby**
- ❖ **Lounge & Kitchen**
- ❖ **On-Site Management**
- ❖ **On-Site Day-Porter**



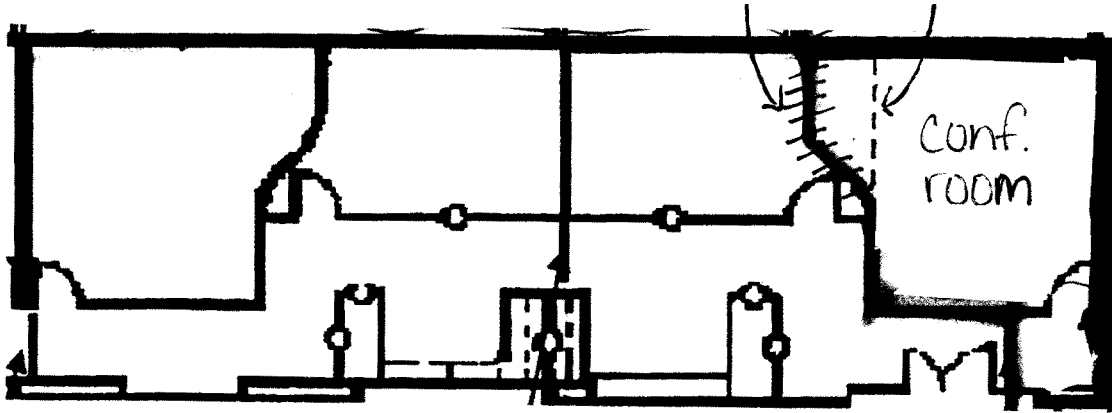
818-483-1625

Karli Snyder

karli@jgmanagement.com

<u>SUITE #</u>	<u>RENTABLE SPACE</u>	<u>DESCRIPTION</u>
116	1,877 SQ. FT.	RECEPTION AREA, 4 WINDOWED PRIVATE OFFICES, 1 COMMON WORKSPACE WITH 4 BUILT IN CUBICLES.

Tenant Pays Electric Directly to So. Cal. Edison Lease Type – Modified Gross

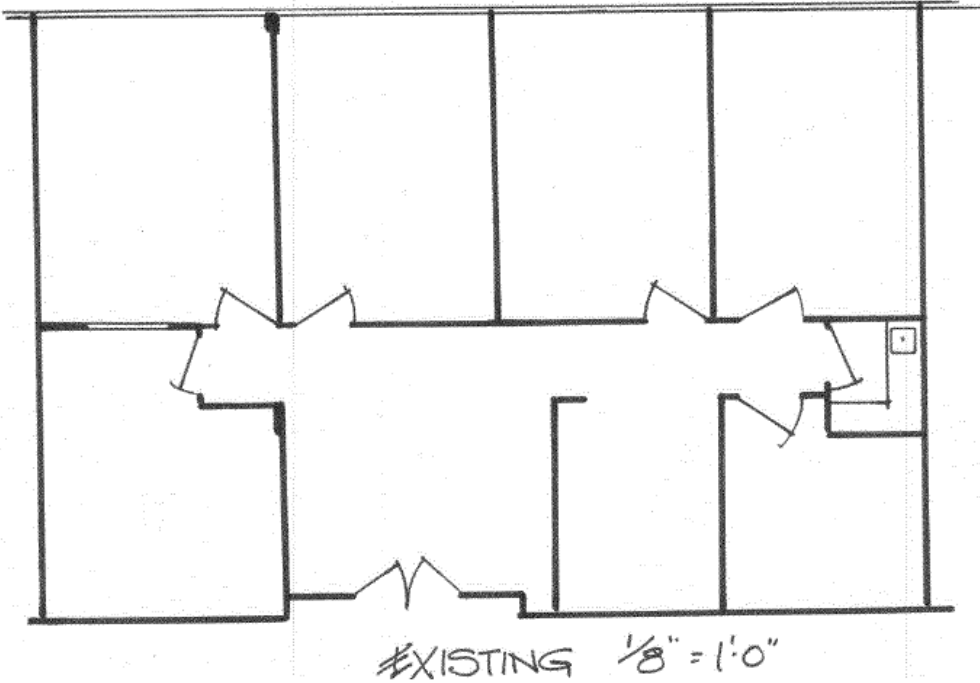


J.G. MANAGEMENT CO.
(818) 707-9494
www.JGMANAGEMENT.com

<u>SUITE #</u>	<u>RENTABLE SPACE</u>	<u>DESCRIPTION</u>
205	1.718 SQ. FT.	RECEPTION AREA, 4 WINDOWED PRIVATE OFFICES, 1 PRIVATE INTERIOR OFFICE, 1 OPEN INTERIOR OFFICE, 1 STORAGE ROOM, AND SINK.

Tenant Pays Electric Directly to So. Cal. Edison Lease Type – Modified Gross

SUITE 205



J.G. MANAGEMENT CO.
(818) 707-9494
www.JGMANAGEMENT.com